

CONEL



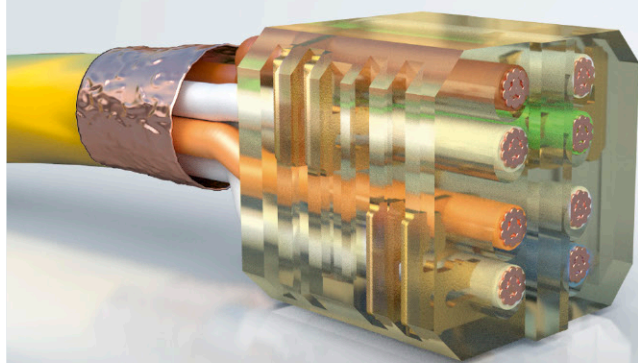
People | Power | Partnership

The key technology for Ethernet cabling.
preLink®

christian.rybar@conel.sk

preLink® – a superior combination of speed and reliability

preLink®
now available
across the full
product range



HARTING's preLink®

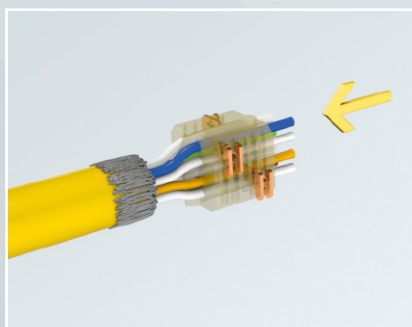
is a complete solution for implementing Ethernet cabling.

This system solution is a comprehensive product range that offers versatile swappable mating profiles, device interfaces and corresponding junction boxes.

The preLink® termination block is at the heart of the system: it can be wired with total safety in one step using our preLink® crimping tool. This ensures that your cabling remains versatile and sustainable into the future – with 100% **process reliability!**

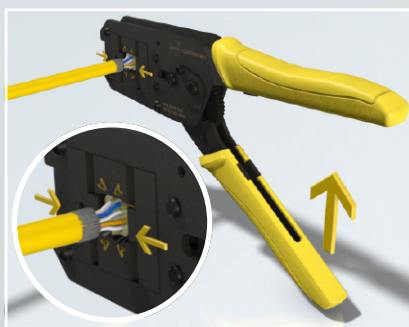
The same three simple steps are required for each installation:

1



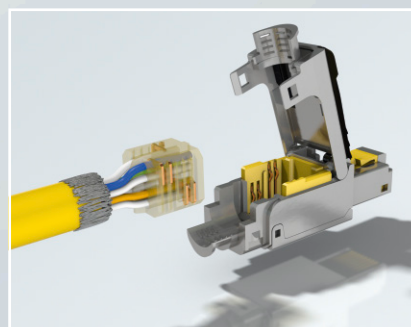
The cable wires are inserted into the preLink® termination block according to their colour codes.

2



The preLink® crimping tool ensures that the wires are always assembled precisely and correctly.

3



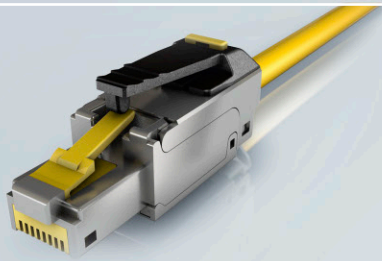
The wired preLink® termination block can then easily be snapped onto a variety of different preLink® mating profiles.

preLink® in action:

Check out our Youtube clip.



Find out more about the preLink® now at www.HARTING.com/preLink



**preLink®
RJ45 connector**
For PROFINET connections



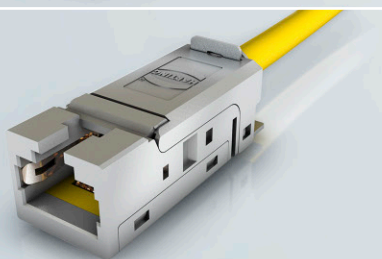
**The Han® PushPull V14 preLink®
RJ45 connector**
For AIDA interfaces



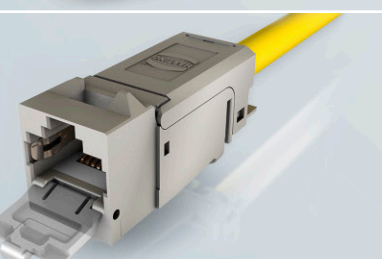
**preLink®
M12 D-coded connector**
For sensor interfaces



**preLink®
M12 X-coded connector**
For railway applications



**preLink®
RJ45 jack HIFF-format**
For panel feed throughs and
service interfaces



**preLink®
RJ45 Keystone jack**
For electrical cabinet patch panels and outlets



preLink® Extender
For cable extensions and
cable transitions: solid-stranded



preLink®

An overview of the advantages:

- Swappable mating profiles: for versatile and sustainable Ethernet cabling
- Our preLink® assembly tool ensures a reliable installation process
- Easy, quick installation in cramped spaces
- Pre-assembled cable segments can be swapped out quickly during maintenance and upgrades
- Comprehensive system-based product portfolio for automation, railway and energy applications

RJ45 connector



- Robust and compact
- For safe installation – even in difficult situations
- Optimised external dimensions provide exceptional plugging reliability for industrial switches

IP20

CAT. 6_APROFI
NET

har-port service interfaces

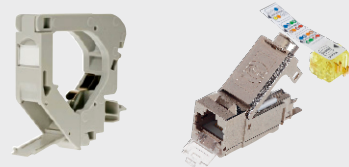


- Attractive service interfaces for initial commissioning and servicing
- Fits into any housing opening with a standardised M22.5 panel cut-out – thanks to our compact HIFF (HARTING industrial form factor) RJ45 jack

IP20

CAT. 6_A

DIN rail outlet

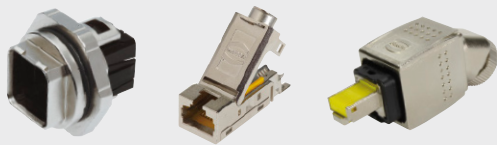


- Easy to install on the DIN rail
- Integrated shield connection to DIN rails in the electrical cabinet
- Small space saving design
- Compatible with standardised Keystone-format

IP20

CAT. 6_A

Han® PushPull connector Electrical cabinet interface and device interface



- Standardised and easy-to-operate PushPull interface
- PROFINET-compliant
- Quick and reliable installation – also for IP65 / IP67 degree of protection

IP65
IP67

CAT. 6_A

PROFINET



M12 connectors and jacks



- Proven M12 robustness
- PROFINET-compliant
- Quick and reliable installation – also for IP65 / IP67 degree of protection
- Quick upgrades from Fast Ethernet to Gigabit Ethernet are possible – thanks to the uniform housings for 4-pole D-coded and 8-pole X-coded

IP65
IP67

CAT. 5
CAT. 6_A

PROFINET



Industrial junction boxes



- Robust, indestructible junction boxes for Han® 3 A und PushPull interfaces
- With optimised cable clamp – so that the cable can be conveniently assembled outside the junction box.
- Quick and reliable installation – also for IP65 / IP67 degree of protection

IP65
IP67

CAT. 6_A

PROFINET



Patch panels and RJ45 jacks



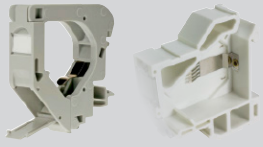





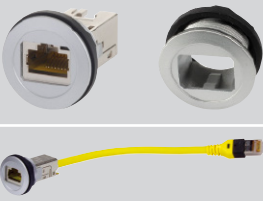






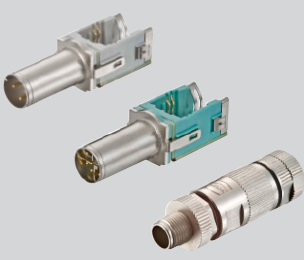




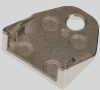
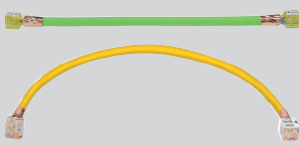
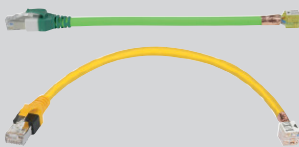
- Industrial 19"-format termination technique
- Compatible to the standardised Keystone-format
- Assembled with 24 Keystone jacks: available as ready-to-use system

IP20

CAT. 6_A



			Advantages	Description	Part number
Components in Keystone-format	Jacks		<ul style="list-style-type: none"> Standardised Keystone-format fits for 19" patch panels and outlets Built-in protective cover 	preLink® RJ45 jack with Cat. 6, Keystone-format incl. cable termination block AWG 24 – AWG 22	20 82 501 0001
				preLink® RJ45 jack with Cat. 6, Keystone-format (without cable termination block) Angled version (without cable termination block)	20 82 500 0001 20 82 500 0002 (Package quantity: 24 pieces)
	19" patch panel		<ul style="list-style-type: none"> Fits with all Keystone-format jacks Inexpensive because of simple set up Additional strain relief mechanism 	19" patch panel, Keystone-format, empty	20 82 400 0002
				19" patch panel, Keystone-format assembled with 24 preLink® jacks for AWG 22 / 23	20 82 405 0001
	DIN rail outlet		<ul style="list-style-type: none"> Fits with all Keystone-format jacks Built-in cover protects against dust Labelling field 	DIN rail outlet, single, empty Cover plate set (with 2 covers)	09 45 851 0000 09 45 851 0001
				DIN rail outlet, single, empty, for row installation Cover plate set	09 45 851 0002 09 45 851 0003
Jacks	M12		<ul style="list-style-type: none"> Highest robustness for railway and industry 	preLink® M12 cable jack, D-coded, 4 poles	20 82 005 2001
				preLink® M12 cable jack, X-coded, 8 poles	20 82 006 2001
	PCB		<ul style="list-style-type: none"> To integrate the preLink® technique to a PCB 	preLink® PCB jack, THR, 8 poles	20 82 007 1100
HIFF-format components	Jacks		<ul style="list-style-type: none"> HIFF-format: for use in Han® 3 A, HARTING PushPull (V4), Han® PushPull (V14) and <i>har</i>-port 	preLink® RJ45 jack with Cat. 6, HIFF-format incl. cable termination block AWG 24 – AWG 22 AWG 27 – AWG 26	20 82 001 0001 20 82 001 0002
				preLink® RJ45 jack with Cat. 6, HIFF-format without cable termination block	20 82 000 0002
	19" patch panel		<ul style="list-style-type: none"> Fits with HIFF-format jacks Movable jack carrier – helps to save time and money during the assembly process Additional strain relief mechanism 	19" patch panel, HIFF-format, empty	20 82 400 0001
	Junction boxes		<ul style="list-style-type: none"> Robust aluminium die cast housing Easy to assemble External attachment and earth connections Degree of protection: IP65 / IP67 	Han® 3 A metal outlet, with 2 Han® 3 A RJ45 ports, assembled with 2 preLink® HIFF-format jacks, for AWG 22 / 23	20 82 102 0101
				Han® PushPull (V14) metal outlet, with 2 Han® PushPull RJ45 ports, assembled with 2 preLink® HIFF-format jacks, for AWG 22 / 23	20 82 104 0101
	Device interfaces		<ul style="list-style-type: none"> Fits with HIFF-format jacks Standardised interfaces can be easily implemented in devices as well as electrical cabinets Degree of protection: IP65 / IP67 	Han® 3 A bulkhead mounted housing Black plastic Grey plastic	09 20 003 0327 09 20 003 0301
				Han® 3 A HIFF adapter for assembling the HIFF modules	09 45 515 0024
				Han® PushPull (V14) bulkhead mounted housing Black plastic Rectangular metal Round metal	09 35 012 0331 09 35 012 0311 09 35 012 0312
	Service interfaces		<ul style="list-style-type: none"> Easy to assemble Compact design 	<i>har</i> -port RJ45 service interface, incl. HIFF coupling	09 45 452 1560
				<i>har</i> -port panel feed through, suitable for holding HIFF modules	09 45 452 0000
			<ul style="list-style-type: none"> Available as standard in lengths from 0.20 m to 10.00 m 	<i>har</i> -port RJ45 service interface with cable (RJ45 jack to RJ45 plug)	09 45 452 1501 – 09 45 452 1518

			Advantages	Description	Part number
Connector	RJ45		<ul style="list-style-type: none"> Industry-proven 	preLink® RJ45 connector	20 82 101 0010
	Han® PushPull		<ul style="list-style-type: none"> Compliant with PROFINET and AIDA Proven PushPull locking mechanism 	Han® PushPull (V14) preLink® RJ45 connector Plastic	20 82 204 0001
				Han® PushPull (V14) preLink® RJ45 connector Straight metal 45° angled metal	20 82 104 0001 20 82 104 0045
	Han® 3 A		<ul style="list-style-type: none"> Standardised PROFINET connector 	Han® 3 A RJ45 preLink® insert	20 82 002 0001
	M12		<ul style="list-style-type: none"> Extremely robust For industrial and railway usage 	preLink® M12 D-coded connector, 4 poles	20 82 005 0001
				preLink® M12 X-coded connector, 8 poles	20 82 005 0002
				preLink® male insert, M12 D-coded, 4 poles	20 82 005 1214
				preLink® male insert, M12 X-coded, 8 poles	20 82 006 1218
				preLink® M12 housing, empty	20 82 000 1210
Accessories	Coupling		<ul style="list-style-type: none"> The simplest cable transition 	preLink® Extender Cat. 6A	20 82 101 0001
	Termination blocks		<ul style="list-style-type: none"> The cable termination is easy to assemble and ensures process reliability Can be combined flexibly with all jacks and plugs 	preLink® cable termination block (AWG 24 – 22) for installation cable	20 82 000 0001 (Package quantity: 10 pieces)
				preLink® cable termination block (AWG 27 – 26) for flexible cable	20 82 000 0003 (Package quantity: 10 pieces)
			<ul style="list-style-type: none"> Protects pre-assembled preLink® cables during feeding and routing 	preLink® protective cover	20 82 000 9915 (Package quantity: 10 pieces)
	Tool		<ul style="list-style-type: none"> Simultaneously crimps all IDC contacts safely while cutting off all individual wires properly The assembly is completed in one step Cycling ratchet mechanism 	preLink® assembly tool	20 82 000 9901
			<ul style="list-style-type: none"> For opening all RJ45 jacks quickly and easily 	preLink® release tool	20 82 000 9916 (Package quantity: 10 pieces)
System cables			<ul style="list-style-type: none"> Ready assembled and tested system cables 	preLink® to preLink® cable 0.2 m up to 10 m	4 poles, Cat. 5 20 82 630 2xxx 8 poles, Cat. 6A 20 82 600 2xxx
			<ul style="list-style-type: none"> Ready assembled and tested system cables 	preLink® to RJ45 IP20 cable 0.2 m up to 10 m	4 poles, Cat. 5 20 82 631 1xxx 8 poles, Cat. 6A 20 82 601 1xxx



Pushing Performance

HARTING.com –
the gateway to your country website.

www.HARTING.ae
www.HARTING.at
www.HARTING.com.au
www.HARTING.be
www.HARTING.com.br
www.HARTING.ca
www.HARTING.ch
www.HARTING.com.cn
www.HARTING.cz
www.HARTING.de
www.HARTING.dk
www.HARTING.es
www.HARTING.fi
www.HARTING.fr
www.HARTING.co.uk
www.HARTING.com.hk
www.HARTING.hu
www.HARTING.co.in
www.HARTING.it
www.HARTING.co.jp
www.HARTING.co.kr
www.HARTINGbv.nl
www.HARTING.no
www.HARTING.pl
www.HARTING.pt
www.HARTING.ro
www.HARTING.ru
www.HARTING.se
www.HARTING.sg
www.HARTING.sk
www.HARTING.com.tr
www.HARTING.com.tw
www.HARTING-USA.com
www.HARTING.co.za

HARTING Technology Group

info@HARTING.com

www.HARTING.com